



Design No. V463
BXUV.V463
Fire-resistance Ratings - ANSI/UL 263

[Page Bottom](#)

Design/System/Construction/Assembly Usage Disclaimer

- Authorities Having Jurisdiction should be consulted in all cases as to the particular requirements covering the installation and use of UL Certified products, equipment, system, devices, and materials.
- Authorities Having Jurisdiction should be consulted before construction.
- Fire resistance assemblies and products are developed by the design submitter and have been investigated by UL for compliance with applicable requirements. The published information cannot always address every construction nuance encountered in the field.
- When field issues arise, it is recommended the first contact for assistance be the technical service staff provided by the product manufacturer noted for the design. Users of fire resistance assemblies are advised to consult the general Guide Information for each product category and each group of assemblies. The Guide Information includes specifics concerning alternate materials and alternate methods of construction.
- Only products which bear UL's Mark are considered Certified.

BXUV - Fire Resistance Ratings - ANSI/UL 263

BXUV7 - Fire Resistance Ratings - CAN/ULC-S101 Certified for Canada

[See General Information for Fire-resistance Ratings - ANSI/UL 263](#)

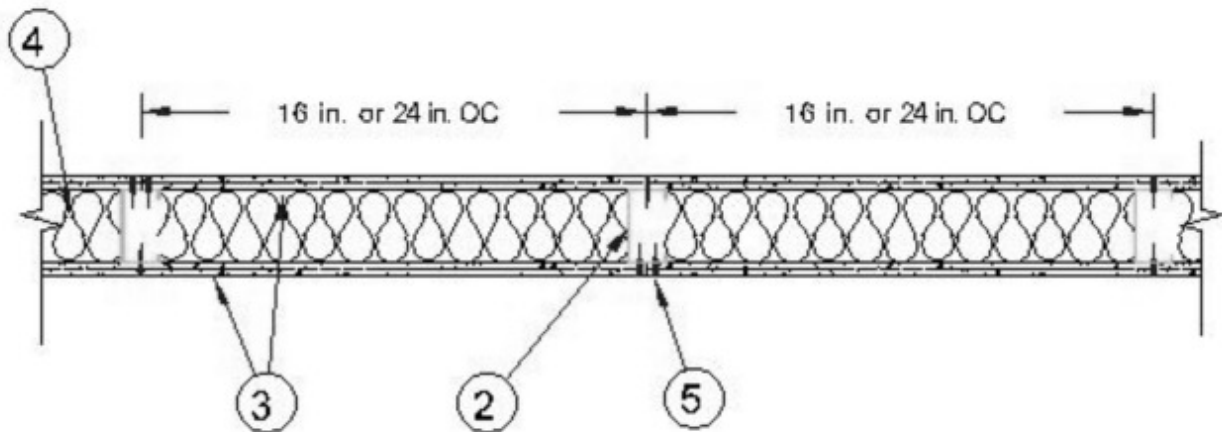
[See General Information for Fire Resistance Ratings - CAN/ULC-S101 Certified for Canada](#)

Design No. V463

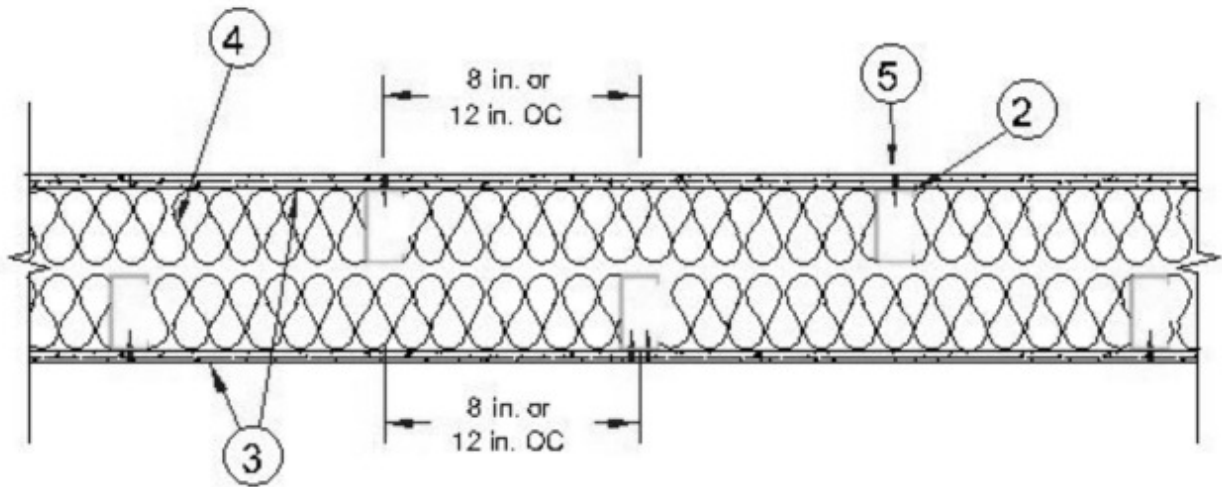
March 26, 2015

Nonbearing Wall Rating — 1 hr

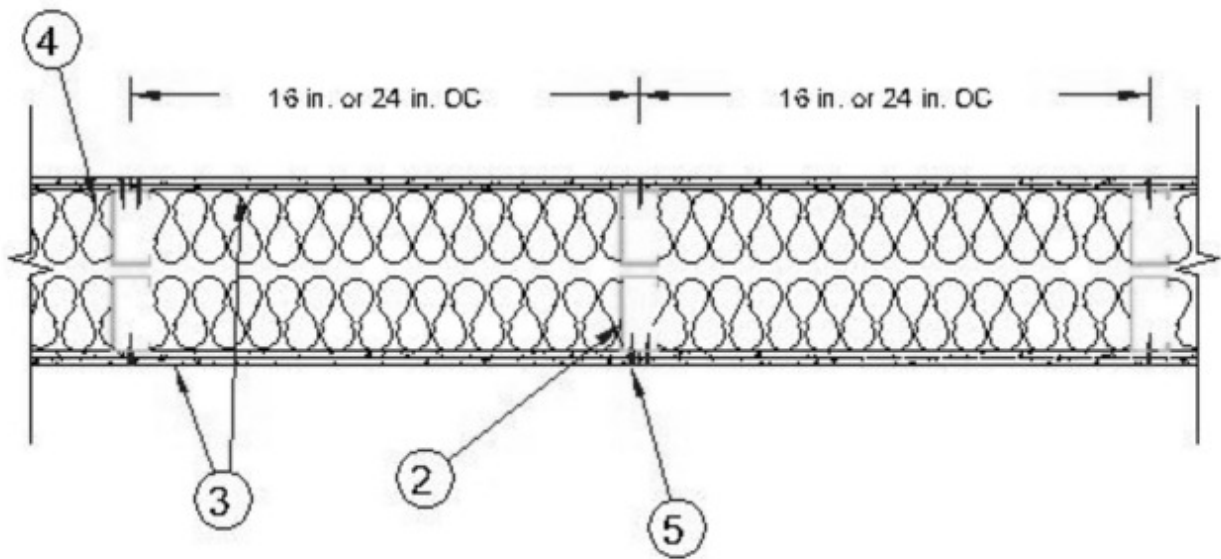
*** Indicates such products shall bear the UL or cUL Certification Mark for jurisdictions employing the UL or cUL Certification (such as Canada), respectively.**



Configuration A



Configuration B



Configuration C

1. Steel Floor and Ceiling Runners — (Not Shown) — Min. 3-5/8 in. wide by 1-1/4 in. deep channel, fabricated from minimum 25 MSG (0.022 in., minimum bare metal thickness) galvanized steel. Attached to the supporting structure with fasteners 2 ft OC. Configurations B and C shall utilize two, separate tracks along the floor and ceiling. Track(s) width to accommodate stud(s) width.

1A. Steel Floor and Ceiling Runers — (Not shown) - as an alternate to item 1 - for use with Item 2A - 4 or 6 in. wide by 1-1/4 in. deep channels, depending on steel stud width (item 2A). Attached to the supporting structure with fasteners 2 ft OC.

SCAFCO STEEL STUD MANUFACTURING CO — Type SoundGuard Framing System

2. Steel Studs — Nominal 1-1/2 in. by 3-1/2 in., spaced 2 ft OC maximum, fabricated from minimum 25 MSG (0.022 in., minimum bare metal thickness) galvanized steel. Studs attached to floor and ceiling runners with 3/8 in. No.6, steel screws on both sides of the studs. For locations that are not accessible for mechanical fastening, the flange of the stud shall be fastened to the track by tack welding.

2A. Steel Studs — As an alternate to Item 2 - for use with Item 1 or 1A. - Double row of min. 1-5/8 in. wide by min. 1-1/4 in. deep studs, separated by 3/4 in. foam spacers (4 in. total width) or double row of min. 2-1/2 in. wide by min. 1-1/4 in. deep stud, separated by 1 in. foam spacers (6 in. total width).

SCAFCO STEEL STUD MANUFACTURING CO — Type SoundGuard Framing System

3. **Gypsum Board*** — Nominal 5/8 in. thick, 4 ft wide panels, applied vertically to studs and runners with 1-1/4 in. long, No. 6, Type S screws spaced at 8 in. OC along the perimeter of the panels and 12 in. OC in the field. Vertical joints centered over studs and staggered one stud cavity on opposite sides of stud. Horizontal joints of vertically applied panels to be staggered 4 ft on opposite sides of the wall.

PABCO BUILDING PRODUCTS L L C, DBA PABCO GYPSUM — QuietRock ES

3A. **Wall and Partition Facings and Accessories*** — (As an alternate to Item 3) — Nominal 5/8 in. thick, 4 ft wide panels, applied vertically to studs and runners with 1-1/4 in. long, No. 6, Type S screws spaced at 8 in. OC along the perimeter of the panels and 12 in. OC in the field. Vertical joints centered over studs and staggered one stud cavity on opposite sides of stud. Horizontal joints of vertically applied panels to be staggered 4 ft on opposite sides of the wall. Horizontal joints of vertically applied QuietRock 527 and QuietRock 528 panels need not be backed.

PABCO BUILDING PRODUCTS L L C, DBA PABCO GYPSUM — QuietRock 527, QuietRock 528, QuietRock 530.

3B. **Gypsum Board*** — **Any 5/8 in. thick UL Classified Gypsum Board that is eligible for use in Design Nos. L501, G512 or U305.** (As an alternate to Items 3 and 3A; on only one side of the assembly, for use only in Configuration A, when the studs are spaced 16 in. or 24 in. OC) — Nominal 5/8 in. thick, 4 ft wide, applied vertically to studs and runners with 1-1/4 in. long, No. 6, Type S screws spaced at 8 in. OC along the perimeter of the panels and 12 in. OC in the field. Vertical joints centered over studs and staggered one stud cavity on opposite sides of stud. Horizontal joints of vertically applied panels to be staggered 4 ft on opposite sides of the wall. Horizontal joints of vertically applied panels need not be backed.

ACADIA DRYWALL SUPPLIES LTD ([View Classification](#)) — CKNX.R25370

AMERICAN GYPSUM CO ([View Classification](#)) — CKNX.R14196

BEIJING NEW BUILDING MATERIALS PUBLIC LTD CO ([View Classification](#)) — CKNX.R19374

CERTAINTED GYPSUM INC ([View Classification](#)) — CKNX.R3660

CGC INC ([View Classification](#)) — CKNX.R19751

GEORGIA-PACIFIC GYPSUM L L C ([View Classification](#)) — CKNX.R2717

CONTINENTAL BUILDING PRODUCTS OPERATING CO, L L C ([View Classification](#)) — CKNX.R18482

LOADMASTER SYSTEMS INC ([View Classification](#)) — CKNX.R11809

NATIONAL GYPSUM CO ([View Classification](#)) — CKNX.R3501

PABCO BUILDING PRODUCTS L L C, DBA PABCO GYPSUM ([View Classification](#)) — CKNX.R7094

PANEL REY S A ([View Classification](#)) — CKNX.R21796

SIAM GYPSUM INDUSTRY (SARABURI) CO LTD ([View Classification](#)) — CKNX.R19262

GEORGIA-PACIFIC GYPSUM L L C ([View Classification](#)) — CKNX.R6937

THAI GYPSUM PRODUCTS PCL ([View Classification](#)) — CKNX.R27517

UNITED STATES GYPSUM CO ([View Classification](#)) — CKNX.R1319

4. **Batts and Blankets*** — UL Classified glass fiber insulation with or without kraft paper facing, nominal 3-1/2 in. thick, nominal density of 0.95 pcf, friction fit between studs to completely fill the stud cavities.

See **Batts and Blankets** (BKNV and/or BZJZ) Categories for names of Classified Companies.

5. **Joints and Screwheads** — Joint compound applied in two coats to joints and screw heads. Paper tape, nominal 2 in. wide, embedded in first layer of compound over all joints.

*** Indicates such products shall bear the UL or cUL Certification Mark for jurisdictions employing the UL or cUL Certification (such as Canada), respectively.**

[Last Updated](#) on 2015-03-26

[Questions?](#)

[Print this page](#)

[Terms of Use](#)

[Page Top](#)

© 2015 UL LLC

When the UL Leaf Mark is on the product, or when the word "Environment" is included in the UL Mark, please search the [UL Environment database](#) for additional information regarding this product's certification.

The appearance of a company's name or product in this database does not in itself assure that products so identified have been manufactured under UL's Follow-Up Service. Only those products bearing the UL Mark should be considered to be Certified and covered under UL's Follow-Up Service. Always look for the Mark on the product.

UL permits the reproduction of the material contained in the Online Certification Directory subject to the following conditions: 1. The Guide Information, Assemblies, Constructions, Designs, Systems, and/or Certifications (files) must be presented in their entirety and in a non-misleading manner, without any manipulation of the data (or drawings). 2. The statement "Reprinted from the Online Certifications Directory with permission from UL" must appear adjacent to the extracted material. In addition, the reprinted material must include a copyright notice in the following format: "© 2015 UL LLC".