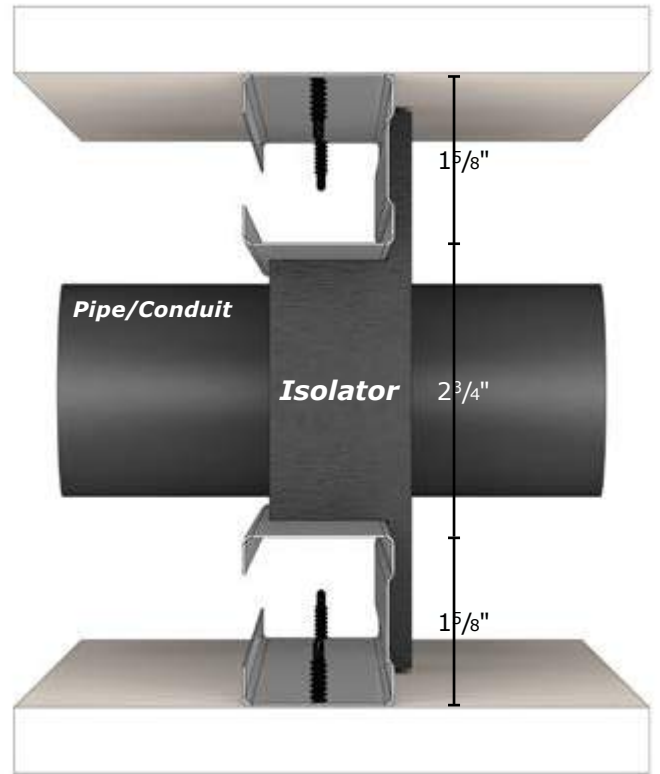
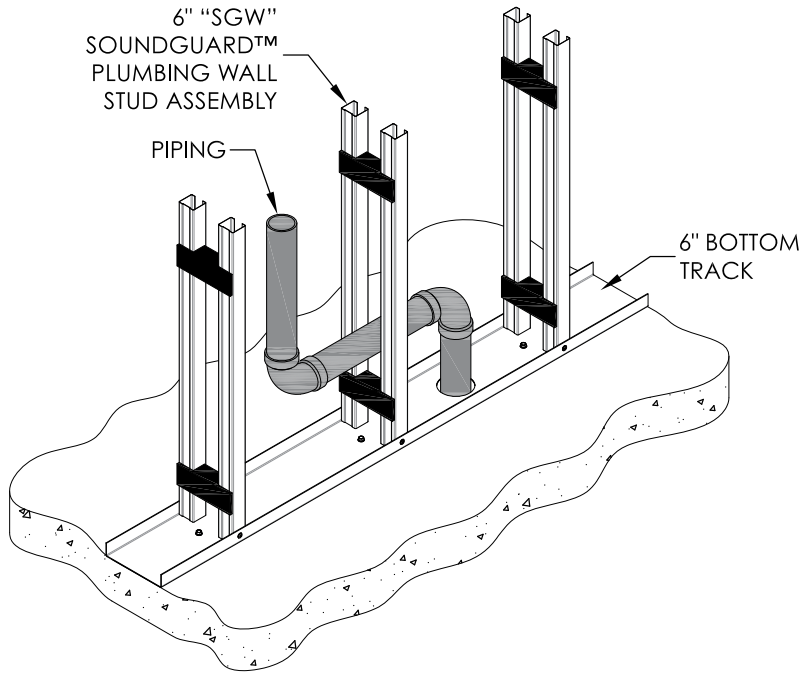


SoundGuard™ Plumbing Wall Design

Features and Benefits

- 2¾" Gap to Allow for Pipes and Electrical Conduit Lines
- Only Available in 6" "SGW" SoundGuard Studs
- UL Certified - UL V463
- STC Tested
- Solves Framing Issues with Conduits and Pipes



Wall Height Tables

Table Notes

1. Allowable composite limiting heights are calculated in accordance using ICC-ES AC 86-2012.
2. The gypsum board must be applied full height to each stud flange and installed using minimum No. 6 Type S Drywall screws spaced a maximum of 12 inch on-center for studs at 24 inch spacing, and 16 inch on-center for studs at 16 inch and 12 inch spacing.
3. A fastener is to be attached through the stud to the track in each flange. Stud end bearing must be a minimum of 1 inch.
4. "f" adjacent to the height value indicates that flexural stress controls the allowable height.
5. Table utilizes 4" wall testing

Composite - 6" Plumbing Wall Height Tables

Part No.	F _y (ksi)	Design Thickness	Minimum Thickness	Spacing (in) oc	5 psf			7.5 psf			10 psf		
					L/120	L/240	L/360	L/120	L/240	L/360	L/120	L/240	L/360
600SGW-30EQD	57	0.0235	0.0223	12	17' - 8"	14' - 0"	12' - 0"	15' - 5"	12' - 0"	10' - 0"	14' - 0"	10' - 7"	8' - 8"
				16	16' - 0"	12' - 8"	10' - 7"	14' - 0"	10' - 7"	8' - 8"	12' - 8"	9' - 2"	-
				24	14' - 0"	10' - 7"	8' - 8"	12' - 0"	8' - 8"	-	10' - 7"	-	-
600SGW-33EQD	57	0.0235	0.0223	12	17' - 8"	14' - 0"	12' - 0"	15' - 5"	12' - 0"	10' - 0"	14' - 0"	10' - 7"	8' - 8"
				16	16' - 0"	12' - 8"	10' - 7"	14' - 0"	10' - 7"	8' - 8"	12' - 8"	9' - 2"	-
				24	14' - 0"	10' - 7"	8' - 8"	12' - 0"	8' - 8"	-	10' - 7"	-	-
600SGW162-33EQS	57	0.0295	0.0280	12	18' - 7"	14' - 9"	12' - 9"	16' - 3"	12' - 9"	10' - 9"	14' - 9"	11' - 4"	9' - 3"
				16	16' - 11"	13' - 5"	11' - 4"	14' - 9"	11' - 4"	9' - 3"	13' - 5"	9' - 11"	8' - 1"
				24	14' - 9"	11' - 4"	9' - 3"	12' - 9"	9' - 3"	-	11' - 4"	8' - 1"	-
600SGW162-43EQS	57	0.0400	0.0380	12	20' - 3"	16' - 1"	14' - 1"	17' - 9"	14' - 1"	12' - 0"	16' - 1"	12' - 9"	10' - 3"
				16	18' - 5"	14' - 8"	12' - 9"	16' - 1"	12' - 9"	10' - 3"	14' - 8"	10' - 11"	8' - 11"
				24	16' - 1"	12' - 9"	10' - 3"	14' - 1"	10' - 3"	8' - 5"	12' - 9"	8' - 11"	-

Sound Rating Data 6" Plumbing Wall

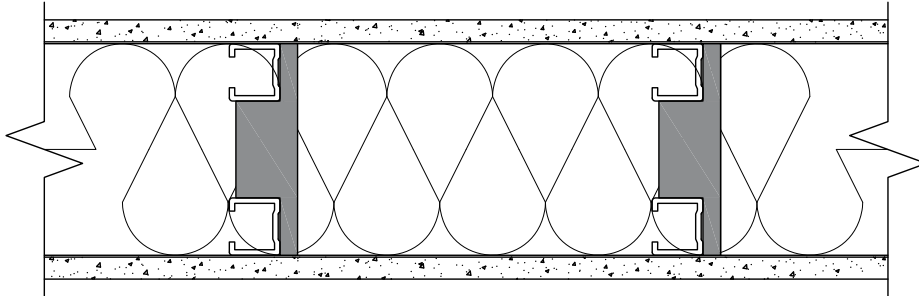


Single Layer 5/8" Type X GWB 1x1 Application

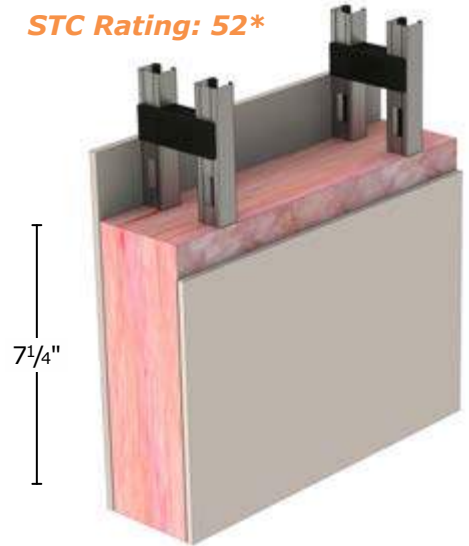
Wall Size	Application	STC Rating	GA-WP Range
6" Plumbing Wall	2 - 1 5/8" Studs, Single GWB each side, R-13 Insulation, 2 3/4" cavity	52*	50-54

*Based on 4" Wall Testing

6" Wall with 1x1 Application



STC Rating: 52*

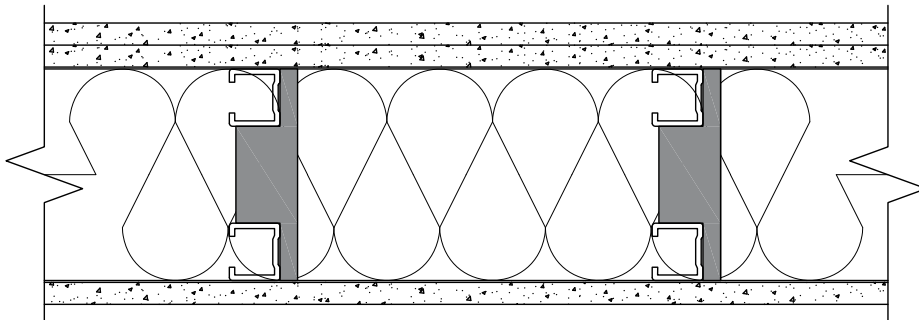


Unbalanced 5/8" Type X GWB 2x1 Application

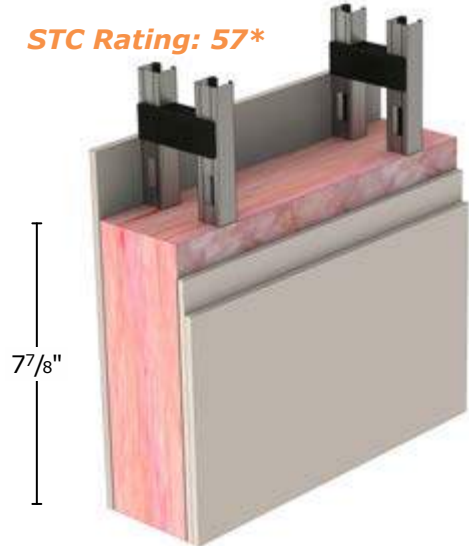
Wall Size	Application	STC Rating	GA-WP Range
6" Plumbing Wall	2 - 1 5/8" Studs, Single GWB one side, Double GWB other side, R-13 Insulation, 2 3/4" cavity	57*	55-59

*Based on 4" Wall Testing

6" Wall with 2x1 Application



STC Rating: 57*

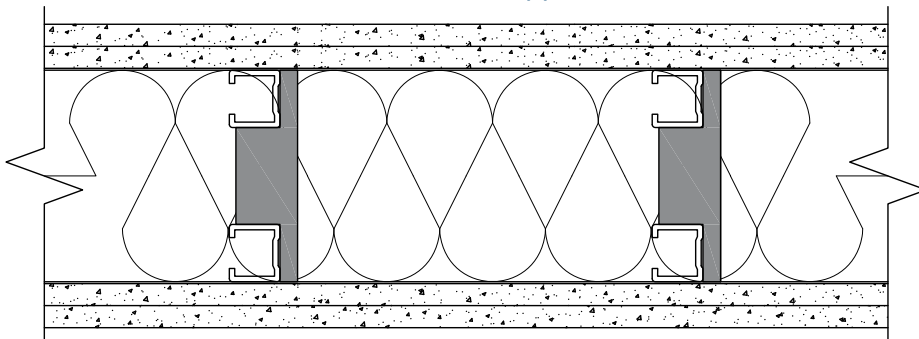


Double Layer 5/8" Type X GWB 2x2 Application

Wall Size	Application	STC Rating	GA-WP Range
6" Plumbing Wall	2 - 1 5/8" Studs, Double GWB each side, R-13 Insulation, 2 3/4" cavity	60*	60-64

*Based on 4" Wall Testing

6" Wall with 2x2 Application



STC Rating: 60*

